



"Our children, our hope, our future"

ORADELL PUBLIC SCHOOL DISTRICT

Budget

2014-2015

Lawrence Hughes, Interim Superintendent
Bert Arifaj, School Business Administrator



Priorities included in the 2014-2015 budget include the following Educational Programs & Services



- Curriculum and Professional Development (OPS & Tri-District)
- Development of 21st Century Learning Environments
- Provision for Special Education and Related Services
- Instructional Programs: Continued support of Math and L Arts Literacy initiatives/common core, Current Science Social Studies, Technology Enhancements
- Continued support of safety and security improvements to enhance instruction and provide a safe learning environment for all
- Provision for Health Services
- Staffing to support Instructional and co-curricular programs
- Support of new mandated Partnership for Assessment of Readiness for College and Careers (PARCC)
- Instructional Support to address needs of ELL students
- Maintenance of existing class sizes

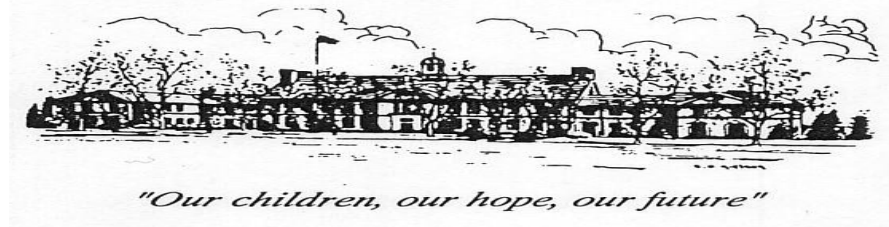




NJDOE Budget Parameters



- Tax Levy Cap = 2%
- Increase in 2014-2015 State Aid:
 - Increase over prior year = \$15,560
 - Plus: change in assessment for debt service on SDA funding = \$15,401
 - Total increase in state aid = \$30,961



Sources of **Revenue** for Oradell Public School

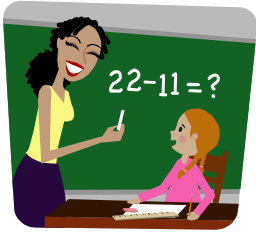




Oradell Public School 2014-2015 Revenues



• Local Tax Levy	\$10,294,274
• Tuition	\$64,655
• Miscellaneous Income	\$25,006
• State Aid Received	\$344,492
• Extraordinary Aid	\$47,000
(Late June/July Actuals)	
• Budgeted Fund Balance	\$160,000
• Total General Fund	\$10,935,427



Appropriations for Oradell Public School





Oradell Public School

2014-2015 Appropriations



• Regular Programs	\$3,525,924
• Special Education	\$772,853
• Basic Skills	\$403,681
• School Sponsor Co-Curr Activities	\$22,356
• Tuition	\$628,527
• Health Services	\$119,837
• Speech, OT/PT, Related Services	\$595,650
• Child Study Team	\$375,140
• Media – School Library	\$134,897
• Instructional Staff Training Services	\$133,161
• General Administration	\$359,291
• School Administration	\$451,014
• Central Svcs & Admin Tech	\$280,181
• Operation/Maintenance	\$954,758
• Student Transportation Services	\$117,000
• Employee Benefits	\$2,033,297
• Debt Service surcharge	\$27,860
• Total General Fund	\$10,935,427



2014-2015 Tax Levy



Local Tax Levy (2.5%)	\$10,294,274
Debt Service *	<u>\$521,200</u>
School Tax Levy to support OPS:	\$10,815,474

***Tax levy previously approved by the community through an earlier referendum (2005).**



Tax Levy over 3 years

	<u>2012-2013</u>	<u>2013-2014</u>	<u>2014-2015</u>
General Fund	\$10,475,410	\$10,678,926	\$10,935,427
Capital Projects	<u> \$0</u>	<u> \$0</u>	<u> \$0</u>
Local Tax Levy	\$9,846,269	\$10,043,194	\$10,294,274
Debt Service	\$567,127	\$504,138	\$521,200
Est. Tax Avg. Home	62.19	43.88	77.60



Tax Calculation on Average Assessed Home

Tax Increase per
Average
Household
\$77.60

**TOTAL LOCAL LEVY (includes
General Fund & Debt
Service)**

\$10,815,474

AVERAGE VALUATION

\$473,198

**SCHOOL LEVY on a TYPICAL
HOME**

\$3,534

**EST TAX INCREASE OVER PRIOR
YEAR**

+/- \$77.60*

EST TAX INCREASE PER MONTH

+/- \$6.47*

*Pursuant to receiving the current ratables from the Borough of Oradell.



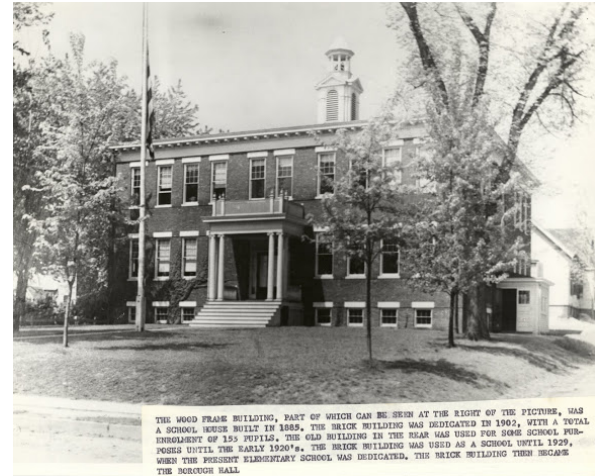
Oradell Public School Receives 2014-2015 Budget Approval



- Adoption of preliminary budget and filing to the Executive County Superintendent by March 20, 2014.
- Budget Approval by Executive County Superintendent by April 24, 2014.
- Budget will be advertised prior to the April 30, 2014 public hearing:
 - The Record Newspaper
 - Posted on the OPS website.
- Board of Education will adopt a final budget on April 30, 2014.



EARLY TWO ROOM SCHOOL HOUSE IN GRADELL. THE FRONT SECTION WAS THE COAT ROOMS THE CLASS ROOMS ON EACH END OF THE MAIN BUILDING, WERE SEPARATED BY FOLDING DOORS, WHICH AFTER THE MORNING ASSEMBLY WERE DRAWN SHUT, SEPARATING THE TWO ROOMS. THIS BUILDING WAS THE DESIGNATED SCHOOL DISTRICT OF THE TOWNSHIP OF MIDLAND FROM 1870 TO 1894 FOR THAT PART OF PARAMUS AS FAR WEST AS THE PRES-
ENT BERGEN ST. ABOUT 1885 AN ADDITIONAL ELL WAS ADDED



THE WOOD FRAME BUILDING, PART OF WHICH CAN BE SEEN AT THE RIGHT OF THE PICTURE, WAS A SCHOOL HOUSE BUILT IN 1885. THE BRICK BUILDING WAS DEDICATED IN 1902, WITH A TOTAL ENROLLMENT OF 153 PUPILS. THE OLD BUILDING IN THE REAR WAS USED FOR SOME SCHOOL PURPOSES UNTIL THE EARLY 1920'S. THE BRICK BUILDING WAS USED AS A SCHOOL UNTIL 1929, WHEN THE PRESENT ELEMENTARY SCHOOL WAS DEDICATED. THE BRICK BUILDING THEN BECAME THE SCOUTS HALL.

Thank You!



THIS BUILDING ORIGINALLY SERVED AS ELEMENTARY AND JUNIOR HIGH SCHOOL. IT WAS DEDICATED IN 1929. ADDITIONS HAVE SINCE BEEN ADDED. THE JUNIOR HIGH SCHOOL STUDENTS NOW ATTEND THE RIVER HILL JUNIOR HIGH, A POINT RIVER SIDE AND GRADELL VENTURE, TOGETHER WITH THE RIVER DELL HIGH SCHOOL.

